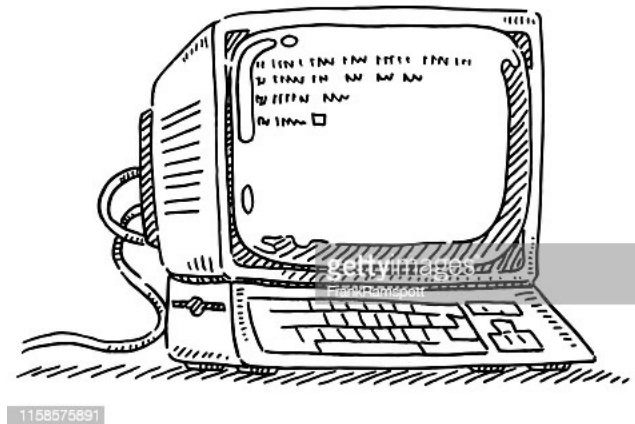


Historical Resource Transition and benefits of RPKI



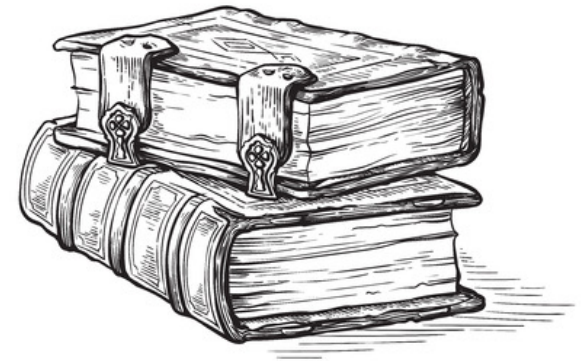
Overview

- Background
- Challenges
- EC Resolutions
- What is RPKI and benefits
- Next Steps

Historical addresses

- Pre-RIR delegations
 - Resources distributed by InterNIC, AUNIC, etc
- No formal agreement with APNIC
- Not managed under policy framework

www.apnic.net/historical-about



Challenges

- Registration data quality
 - Inaccurate, outdated registration
 - Lack of registration
 - Difficult to establish custodianship
- In the past unprotected
 - ‘Stealing’ past unprotected records
 - Unauthorized usage of address space
 - Hijacking by spammers and hackers



prop-018: Protecting historical records

- All historical resources protected by APNIC-HM maintainer
- Historical custodians had to sign up as Non-Members (AUD 200 'Historical Resource Maintenance')
- Access to basic Registration Services
 - MyAPNIC
 - Whois/IRR
 - in-addr.arpa
- **No RPKI Service**



EC resolutions

- From 1 May 2021, RPKI access to be made available for all historical resources held under APNIC accounts



EC resolutions

Resolution 2021-09: RESOLVES that all historical resource holders will need to become, or remain, a member or non-member of APNIC on and from 1 January 2023, in order to continue to receive registry services from APNIC



APNIC Whois database and the Internet Routing Registry (IRR)

- APNIC Whois Database
 - Two databases in one
- Public network management database
 - Whois information about networks and contacts (IP addresses, ASNs and so forth)
- Routing Registry (RR)
 - Contains routing information (routes, filters, peers and so forth)
 - APNIC RR is part of the global IRR

Routing Registry objects

route
route6
aut-num
as-set
rtr-set
filter-set
peering-set
...

route and route6 object

Represents a single IPv4/IPv6 route injected into the Internet routing mesh

```
route6:      2001:df2:ee01::/48
descr:       Prefix for APNICTRAINING LAB DC
origin:      AS45192
mnt-by:      MAINT-AU-APNICTRAINING
last-modified: 2016-06-23T14:32:38Z
source:      APNIC
```

```
route:       202.125.97.0/24
descr:       Prefix for APNICTRAINING LAB DC
origin:      AS45192
mnt-by:      MAINT-AU-APNICTRAINING
country:     AU
last-modified: 2016-06-16T23:23:17Z
source:      APNIC
```

Out of date route objects

```
whois -h whois.radb.net 203.76.192.0/24
```

```
route:      203.76.192.0/24
descr:      Proxy-registered
origin:      AS55821
source:      NTTCOM
```

```
route:      203.76.192.0/24
descr:      Proxy-registered
origin:      AS17970
source:      RADB
```

```
route:      203.76.192.0/24
descr:      REACH (Customer Route)
origin:      AS23944
source:      REACH
```

Resource Public Key Infrastructure

What is RPKI?

A robust security framework for verifying the association between **resource holders** and their **Internet number resources**.

Route Origin Authorization

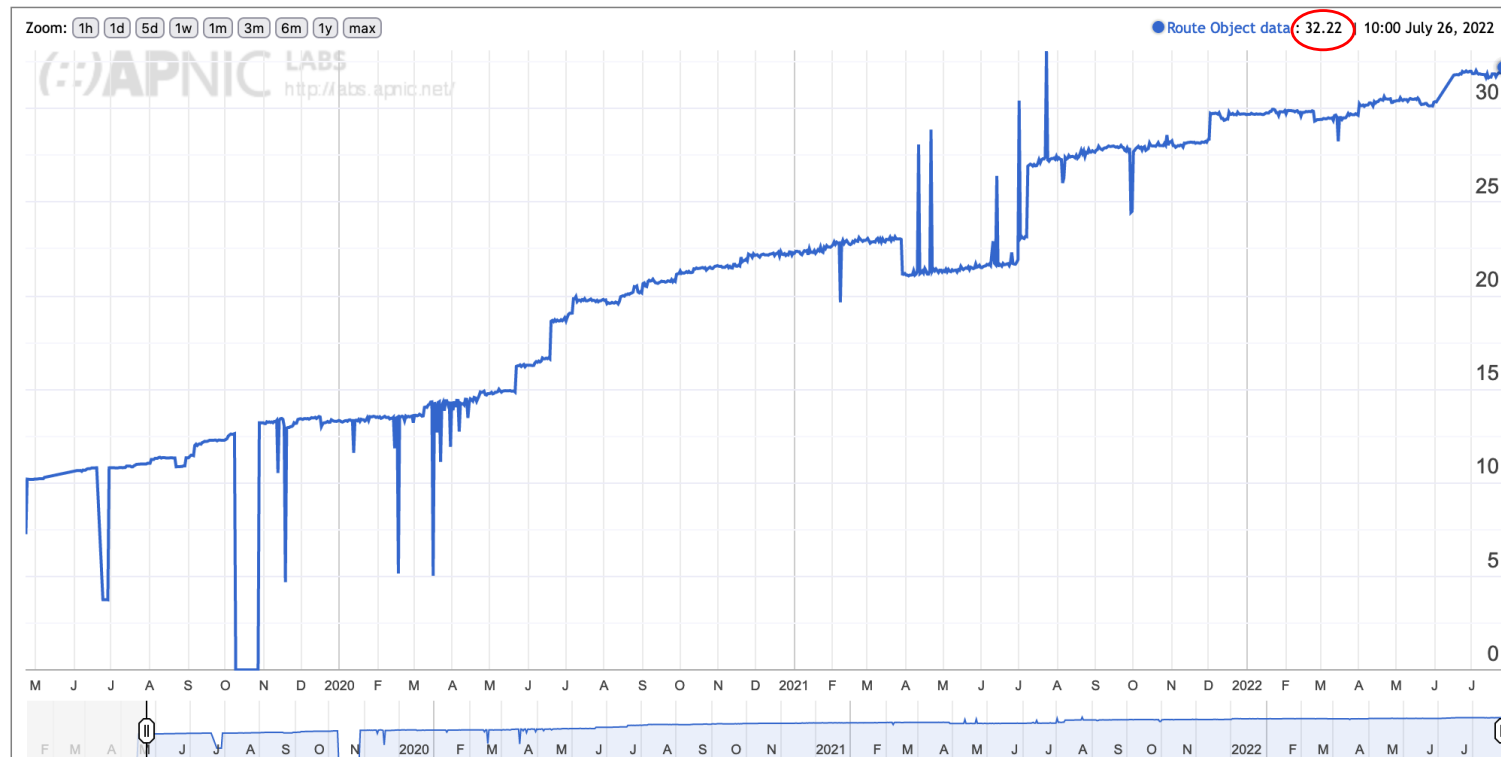
What is contained in ROA?

- The AS number you have authorized
- The prefix that is being originated from it
- The most specific prefix (maximum length) that the AS may announce

eg : “ISP 4 permits AS65551 to originate a route for the prefix 198.51.100.0/24”

ROA coverage – Asia Pacific

Display: **Addresses** (Advertised ROA-Valid Advertised Addresses), **IPv4**, **Percent** (of Total)



<https://stats.labs.apnic.net/roas>

Route Origin Validation

Status

Displaying 30 major operators

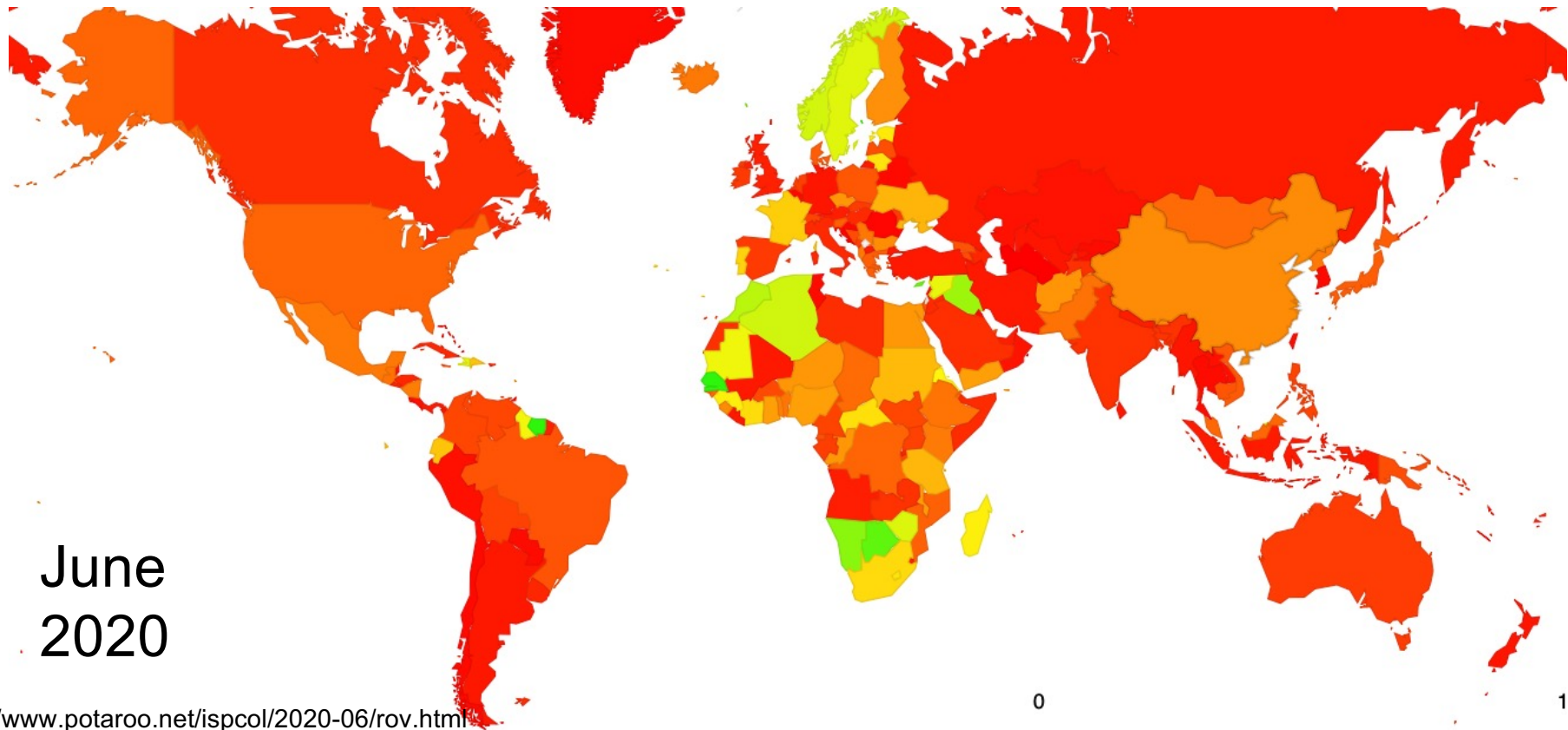
+ Show all

+ Show ASN column

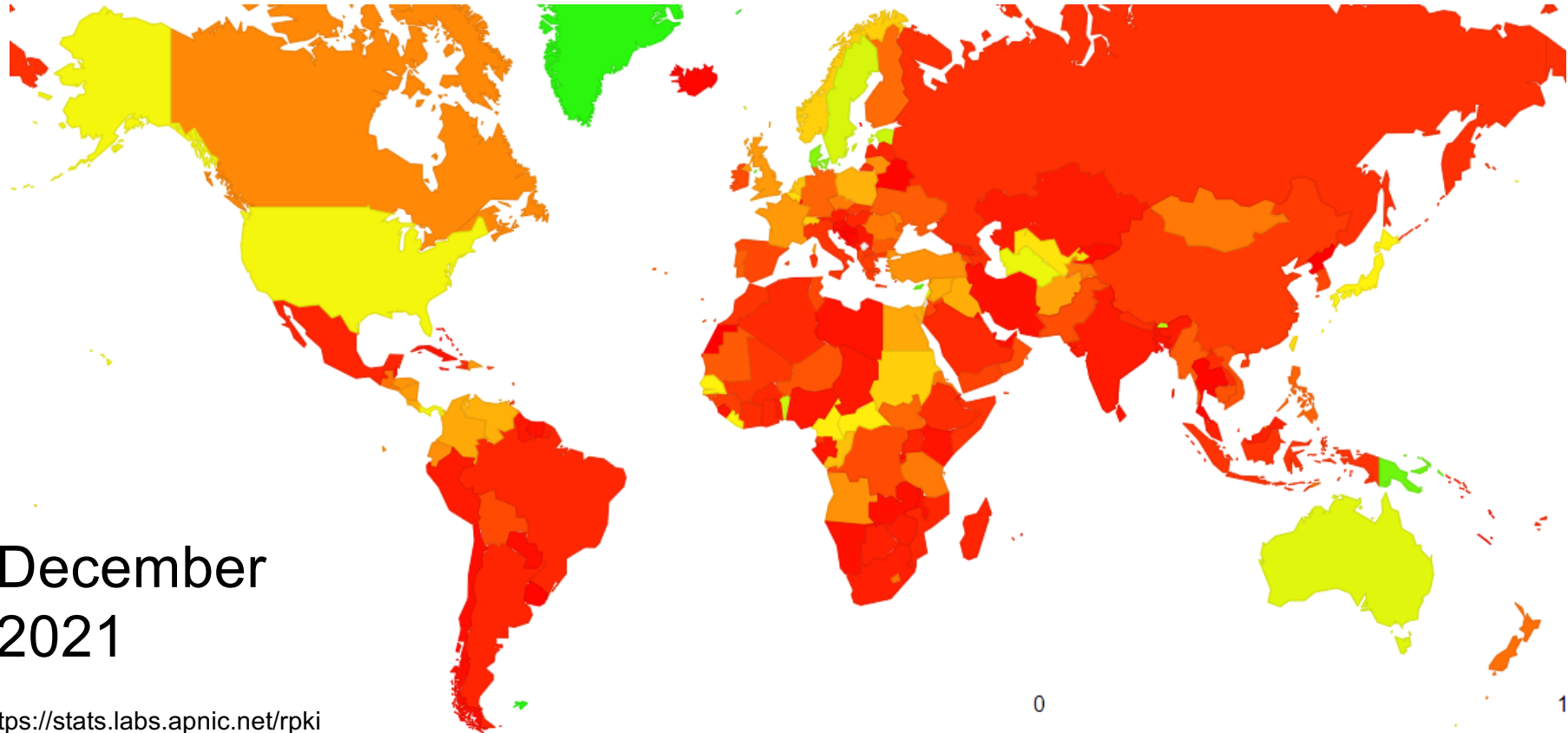
NAME	TYPE	DETAILS	STATUS ▲
Lumen	transit	signed + filtering	safe
Arelion (Formally Telia)	transit	signed + filtering	safe
Cogent	transit	signed + filtering	safe
NTT	transit	signed + filtering	safe
Hurricane Electric	transit	signed + filtering	safe
GTT	transit	signed + filtering	safe
TATA	transit	signed + filtering	safe
PCCW	transit	signed + filtering	safe
RETN	transit	partially signed + filtering	safe
Orange	transit	signed + filtering	safe
Comcast	ISP	signed + filtering	safe
Cloudflare	cloud	signed + filtering	safe
Amazon	cloud	signed + filtering	safe
Netflix	cloud	signed + filtering	safe
Wikimedia Foundation	cloud	signed + filtering	safe
Scaleway	cloud	signed + filtering	safe

<https://isbgpsafeyet.com/>

RPKI: The Numbers - ROV



RPKI: The Numbers - ROV



Registry Services

- Historical resource registration will no longer be published in the APNIC Whois Database

```
% [whois.apnic.net]
% Whois data copyright terms      http://www.apnic.net/db/dbcopyright.html

%ERROR:101: no entries found
%
% No entries found in source APNIC, JPNIC, KRNIC, TWNIC, IDNIC, IRINN-GRS.

% This query was served by the APNIC Whois Service version 1.88.16 (WHOIS-AU1)
```

Registry Services

- Resources will be placed into reserved status

```
apnic|JP|ipv4|27.98.0.0|32768|20100520|allocated|A926971F
apnic|JP|ipv4|27.98.128.0|16384|20100520|allocated|A926971F
apnic||ipv4|27.98.192.0|4096||reserved|
apnic|CN|ipv4|27.98.208.0|4096|20100525|allocated|A92BC92E
apnic|CN|ipv4|27.98.224.0|8192|20100524|allocated|A92FBBB4
```

Registry Services

- Resources will be added under APNIC AS0 ROA



Number of historical prefixes

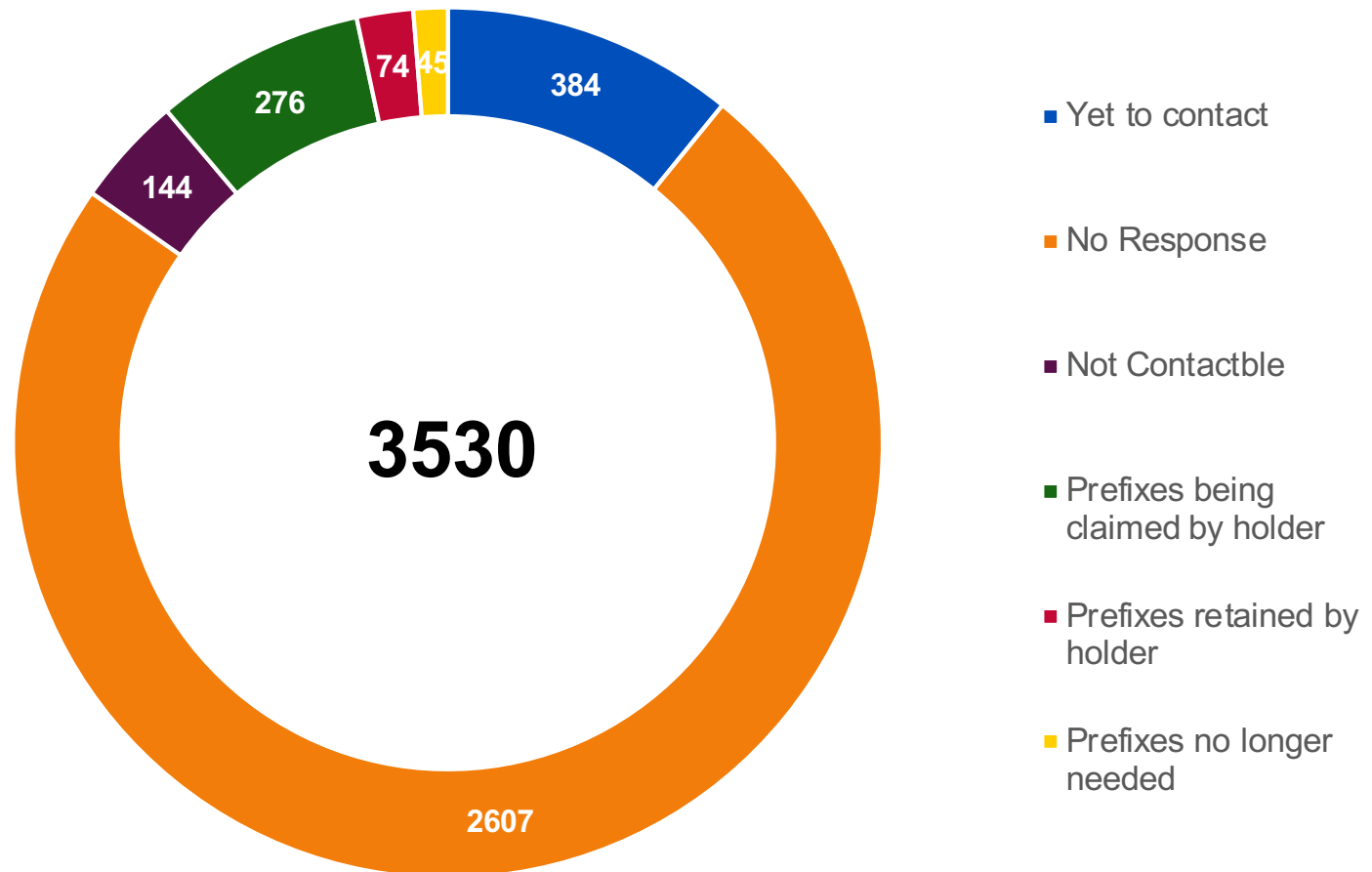
Prefix size	Number of prefixes
/15	1
/16	85
/17	1
/18	3
/19	10
/20	38
/21	59
/22	183
/23	404
/24	3147

Total number of prefixes: 3931
Total number of cases: 3530

Process to contact historical custodians

- i. Email whois contact associated with the prefix
- ii. Search for alternate contacts via company registry, company website, web searches etc
- iii. If prefix is being routed, contact ASN to identify custodian

Case outcomes



Next steps

- Original custodians of historical IPv4 addresses
 - Sign-up as Members (most cost-effective option)
 - Associate Membership fee of AUD 500 per annum
 - This fee has been waived for the 12-months
 - First invoice from APNIC on the anniversary of your sign-up on renewal of your membership
 - Regular fee will apply for 'current' resources
 - Historical resource maintenance fee for Non-Membership accounts will be removed from the APNIC Non-Member Fee Schedule effective 1 January 2023
 - Convert to Associate Member (AUD 500) in 2023. Historical resources will not be considered in your fee calculation



Next steps

- If you have acquired the original custodian as a result of business acquisition, merger or takeover
 - Required to setup a Member Account and transfer the resources under the Historical resource transfer policy
- APNIC trying to contact custodians of historical IPv4 address space
- Any queries contact your friendly APNIC Helpdesk!
 - <https://help.apnic.net/s/contactsupport>



Questions ?